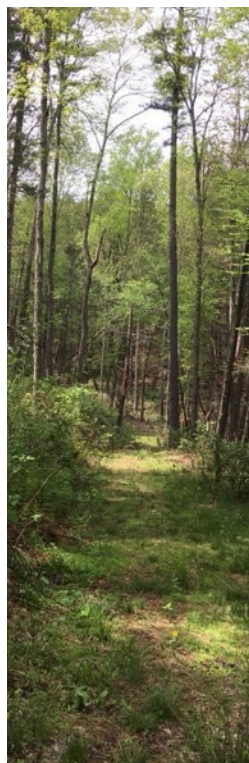




## TRAIL RIDE & PICNIC SCHEDULE

**Everyone welcome:** Adults \$25.00 / Juniors \$15.00 / Picnic only \$15.00

More info available at <https://www.nm-mvh.com/Trailride.html> and on our facebook page, NM-MVH



**June 6 - Adams Farm - 10AM**  
Frederick, MD area Contact  
Niqui 301-471-2308

◆  
**June 13 - Host Joe Michael - 10AM**  
Contact Chad 202-557-9894

◆  
**June 20 - Sharon Hanna - 10am**  
McConnellsburg PA area -  
Contact Chad 202-557-9894

◆  
**June 26 - Frey Farm - 2:00PM**  
Frederick/ Mt. Airy, MD area  
Contact Niqui 301-471-2308

**July 11- Little Bennett - 5PM**  
Clarksburg area  
Contact Niqui 301-471-2308

◆  
**August 15 - Woodstock - 10AM**  
Beallsville, MD area  
Contact Niqui 301-471-2308

**Covid Release, & Waiver Printable PDFs**  
<https://www.nm-mvh.com/Trailride.html> Payment  
via check, cash or via PayPal (PayPal.me/nmmvh  
- please do not check the box for goods &  
services) Juniors must have a parent or legal  
guardian sign their forms.  
For last minute info, weather related changes call  
the monitor 301-371-4081

## NM-MVH HORSE SHOW • July 18 • Whiting's Neck Equestrian Center

391 Steeplechase Lane, Martinsburg WV 25404  
More info <https://www.nm-mvh.com/HorseShow.html>

# TRAIL RIDE SEASON PASS - \$100.00

*Can be purchased at the first couple of trail rides*